



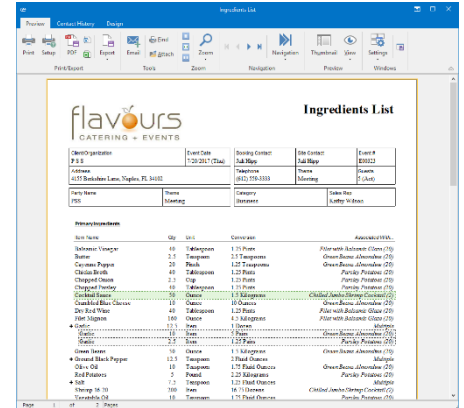
Top 10 Reasons to Upgrade to CaterEase Standard

Perfect for banquet facilities and caterers with advanced menu management needs, the Standard version of CaterEase includes all the features of Express plus additional power tools – including scalable ingredients list, equipment lists, employee scheduling and much more.

CaterEase Software
CaterEase offers something for everybody. Both our desktop and hosted solutions come in three different versions – Express, Standard and Professional – to offer the perfect package for any sized budget!

1. Managing Menu Item Ingredients

Create a detailed, scalable list of ingredients for any menu item – even including “sub-recipes” within recipes for home-made sauces, gravies, etc. All ingredients will be automatically retrieved and quantified in custom units of measure as you build menus for your parties. Track all ingredients needed for any individual event or for any day or date range.



2. Managing Required Items (Equipment Packing Lists)

Create a detailed list of equipment items – chafing dishes, dinner plates, serving spoons, wetnaps, etc. – required to serve any menu item. Like ingredients, these required items will be automatically retrieved and quantified in custom packing units as you build your menus. These items can also be tracked for individual events or for any day or date range.

3. Saving Custom Grid Filters and Views

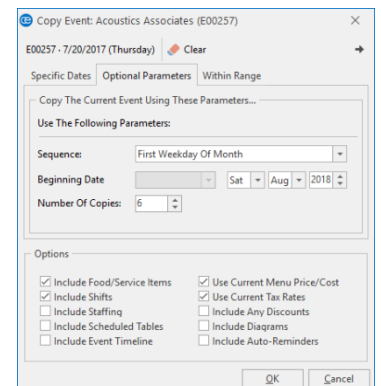
There are dozens of detail grids throughout the program – in managers, in query results, etc. – and each one of them can be customized to show only the records and details you want to see. The Standard version allows you to save any number of these custom filters and grid views for use over and over – so virtually any answer to any question about your business is a couple of mouse clicks away.

4. Additional Menu Selection Options

Additional tools in the Standard version of CaterEase make selecting menu items even easier. Establish a default quantity for any menu item, link item quantities to a party’s guest count or even combine the two together to have CaterEase automatically calculate a certain number of items per guest (even optionally rounding up or down if desired!). You can even create automatic menu packages, where CaterEase retrieves an entire group of random items from random menus simply because you have associated them to each other.

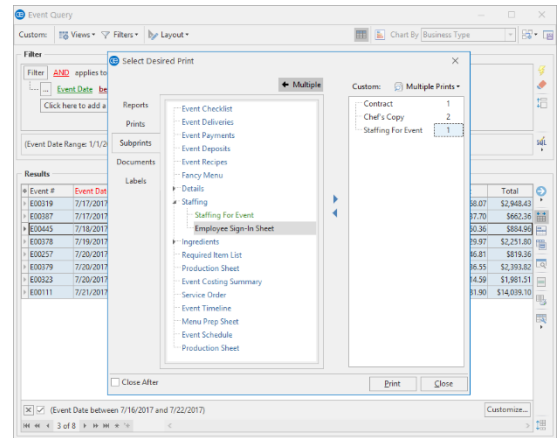
5. Copying Events to Regular Intervals

While the Express version of the program lets you copy an event to up to two dates simultaneously, the Standard version lets you copy to up to ten (10) specific dates – as well as copy a party to regular intervals (daily, weekly, monthly, etc.). You can even copy an event to specific days for any date range – such as every weekend for the summer, etc.



6. Generating Multiple and Batch Prints

Using the program's powerful query tools, you can create a list of events based on virtually any criteria – and then generate prints for every one of those parties with essentially a mouse click! You can even choose multiple prints – as many as you want – and generate all of your chosen prints for all of your chosen parties simultaneously. Talk about a time-saver!

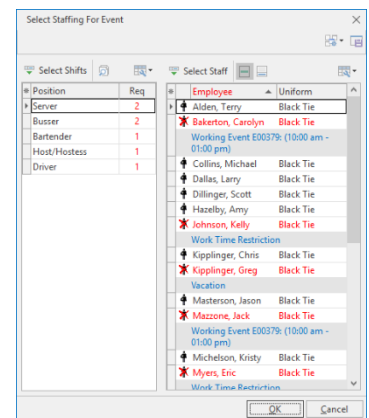


7. Tracking Changes to Events

You can track all changes made to your events, when they were made and by whom using the Caterease Audit Trail. This can be printed for one individual party or for all parties during an entire day or date range.

8. Scheduling Employees for Events

Select employees to work your various parties – complete with position, wage, uniform and more. Conflict messages warn you if an employee is not available due to vacation time, work schedule or conflict with another event. You can even establish conditional shift wizard rules so that the program knows how many employees you need for each shift based on the type of event.

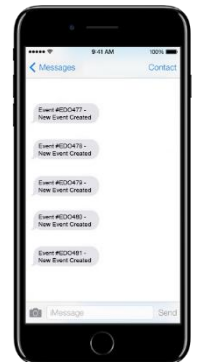


9. Creating Conditionally Required Fields

Not only can you require that certain fields not be left blank, but you can even set these rules conditionally – so one type of party or client has one set of required fields, while another type has different requirements.

10. Creating Automatic User Notifications

Each user of the program can tell Caterease which changes he or she wants to be notified about, and even set conditions for those changes based on event date, status, type, etc. Then, in addition to receiving these automatic change notifications on the screen, users can opt to receive notifications automatically via text or email.



For a more detailed
version comparison:
[www.caterease.com/
products/versions](http://www.caterease.com/products/versions)
800.863.1616